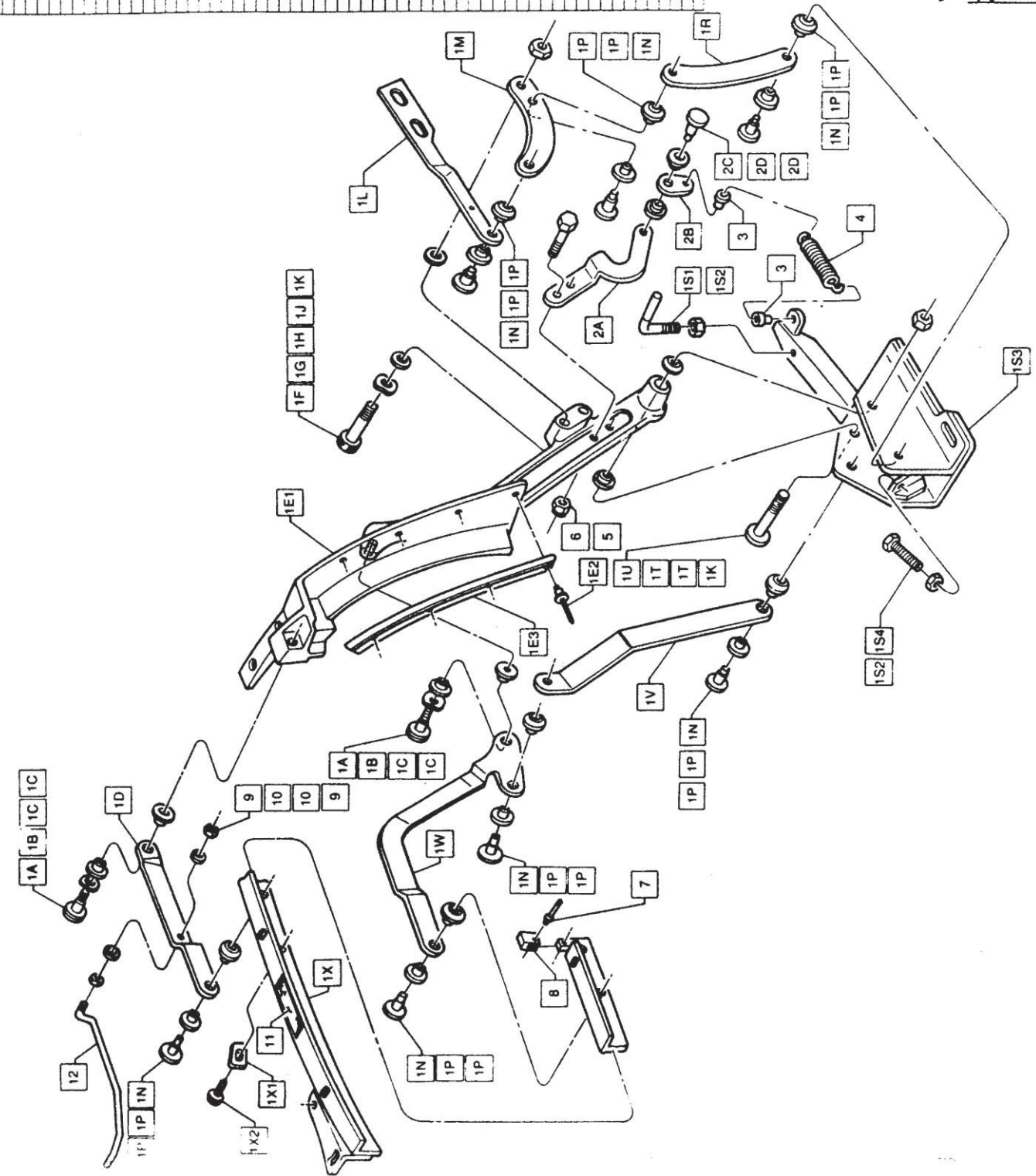


Ref	ASC Part No	Description	GM
1	A-27X0-3111	TOP STACK ASSY - LESS TRIM	
	A-27X0-1874	RAIL ASBY - SIDE COMPLETE (RH)	
	X-0650-1495	BOLT (M6 x 1.0 x 21.5)	
	X-0650-2020	WASHER	12504804
	X-0650-1415	BUSHING	
	W-27X0-2016	CENTER LINK - SIDE RAIL (RH)	14100538
	W-27X0-2017	(LH)	
	W-27X0-3032	RAIL ASSY - REAR (RH)	12504802
	W-27X0-3033	(LH)	
	W-27X0-3236	REAR RAIL (RH)	12505003
	W-27X0-3237	(LH)	
	X-0650-0180	RIVET (1.8 x .375)	
	W-27X0-3798	EXTENSION - REAR RAIL (RH)	
	W-27X0-3799	(LH)	
	X-0650-2004	SCREW (5/16 - 18 x 1.0)	12504878
	X-0650-1078	WASHER	
	X-0650-1215	WASHER	
	X-0650-0488	WASHER	
	X-0650-0488	NUT	12504832
	W-27X0-7840	SLAT - BOW NO 8 (RH)	
	W-27X0-7841	(LH)	
	W-27X0-1784	LINK - PIVOT BOW NO 5	
	X-0650-0902	RIVET (2.48 x .175)	
	X-0650-0908	BUSHING	
	W-27X0-1784	LINK - CONTROL BOW NO 5	
	A-27X0-7376	BRKT ASSY - MAIN PIVOT COMPL (RH)	
	A-27X0-7377	(LH)	
	A-27X0-0960	DOWNSTOP - BUMPER	
	X-0650-1595	RIVET (M6 x 5.8 x 20.0)	114505
	A-27X0-2022	LINK ASSY - MAIN PIVOT (RH)	
	A-27X0-2021	(LH)	
	X-0650-1880	BOLT (3/8 - 16 x 1.50)	121524
	X-0650-0923	BUSHING	
	X-0650-0921	SCREW (5/16 - 18 x 2.5)	20498867
	V-27X0-2020	BALANCE LINK - MAIN PILLAR (RH)	12504384
	V-27X0-2021	(LH)	
	W-27X0-2014	PIVOT LINK - BI RAIL CONTROL (RH)	
	W-27X0-2015	(LH)	
	W-27X0-2630	RAIL ASBY - SIDE (RH)	
	W-27X0-2631	(LH)	
	W-27X0-4433	STOP - ADJUST SIDE RAIL	
	X-0650-0924	SCR & WASHR ASSY (M6 x 1.0 x 14.0)	12504386
	A-27X0-5272	BRKT ASSY - RR RL TSTACK ASST (RH)	12509946
	A-27X0-5273	(LH)	12509947
	A-27X0-2052	BRKT - RR RL TSTACK ASST (RH)	
	A-27X0-2053	(LH)	
	A-27X0-2084	LINK - TOP STACK ASSIST	
	X-0650-2178	RIVET (M6 x 5.8 x 20.0)	
	X-0650-1415	BUSHING	14100538
	X-0650-0128	NUT	01009943
	A-27X0-6805	SPRING	12509942
	X-0650-3684	WASHER	
	X-0650-0162	WASHER	
	X-0650-1331	ZEDX	
	X-0650-2474	RIVET (1.8 x .312)	
	X-0650-1111	ISOLATOR - ANTI-RATTLE	12504796
	X-0650-1111	WASHER	
	X-0650-0237	AXIS TAPE	
	W-27X0-5640	LINK - NO 2 BOW ACTUATOR (RH)	
	W-27X0-5641	(LH)	

SERVICE ONLY

W-27X0-85X37 PKG ACTR & HOWR BOW NO 2 (RH/LH) 12504750-1
 CONSISTS OF 9 10 12 3 4 SEE SHEET 4B



DATE: 11/11/03
 REVISIONS: 1
 DRAWING RELEASED: 11/11/03
 DATE: 11/11/03

ASC Incorporated
 Graphics Department
 Engineering Center
 Incorpore Building 4014

12504750-1
 1991.5 "F" BODY CONVERTIBLE
 RAIL ASSEMBLY - SIDE, REAR, AND PIVOT BRACKET

A-27X0-4960-AXXX SHEET 4A