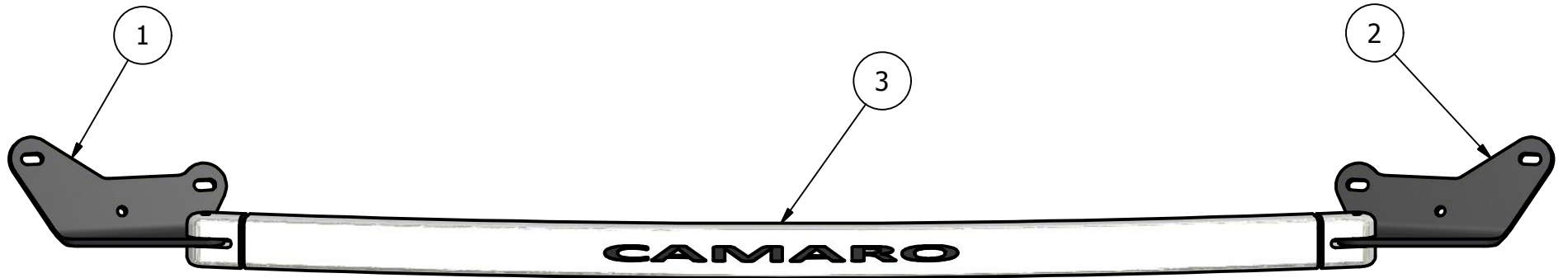




PARTS LIST

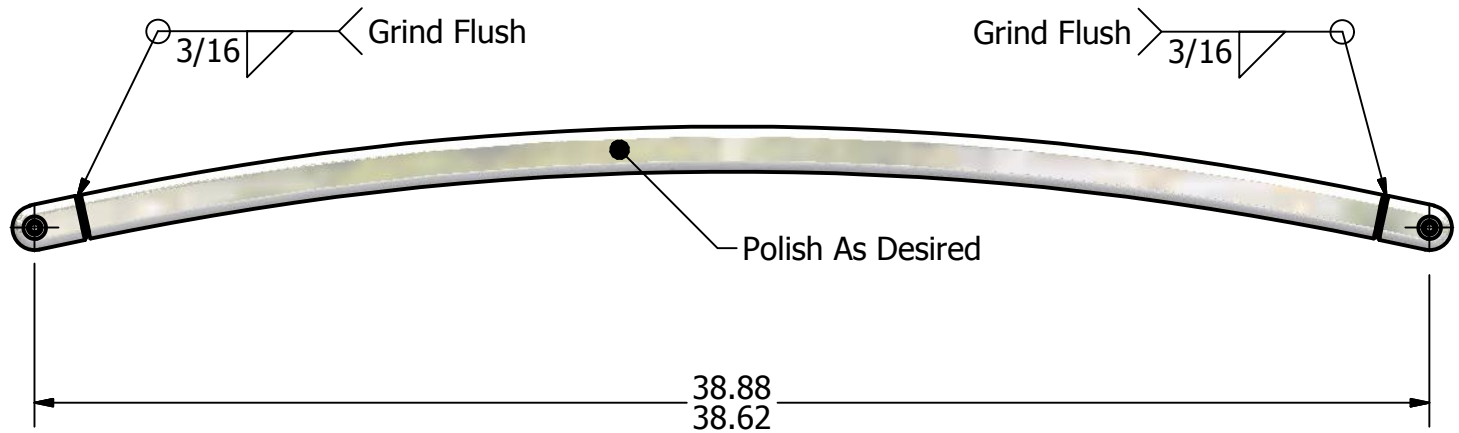
ITEM	QTY	PART NUMBER	DESCRIPTION
1	1	Strut Support Bracket, Left	HR Mild Steel, 1/4" Plate
2	1	Strut Support Bracket, Right	HR Mild Steel, 1/4" Plate
3	1	Strut Bar Weldment	
4	2	SHSCS .375 x 1, SS	Socket Head Shoulder Cap Screw, 3/8 x 1" long



Shock Tower Brace Assy



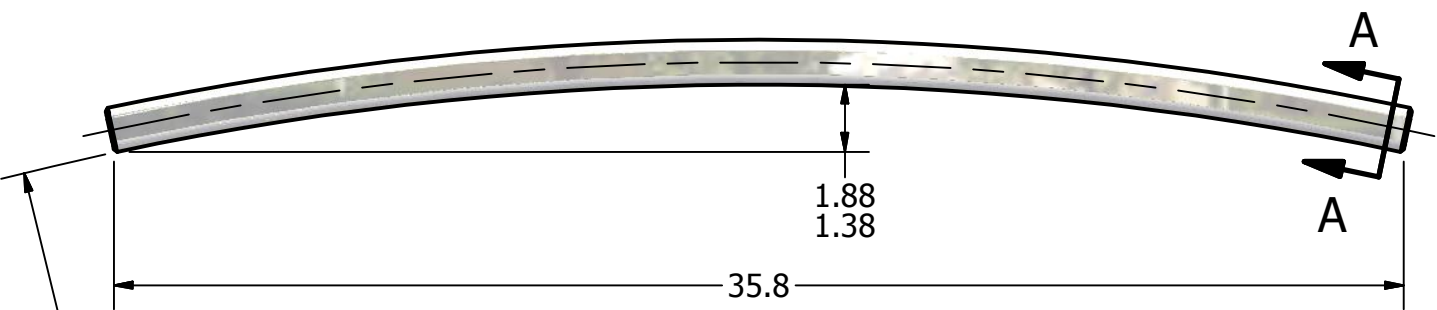
PARTS LIST			
ITEM	QTY	PART NUMBER	DESCRIPTION
1	1	Strut Tube	6061-T6 AL, 1.75 x 1.25 x 0.16 wall
2	2	Clevis Joint	6061-T6 AL



Strut Bar Weldment  
Qty = 1

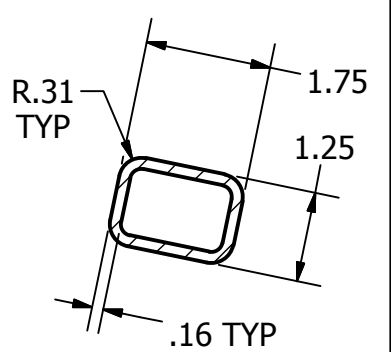


Engrave 0.50 Text x 0.03 ▽  
Tahoma Font w/400% Stretch



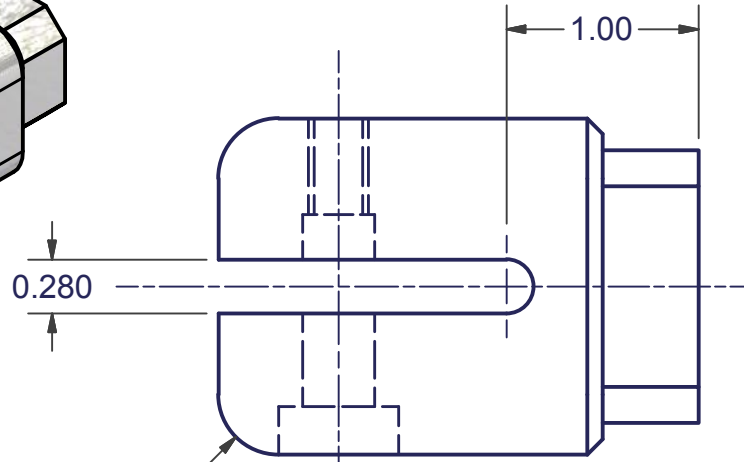
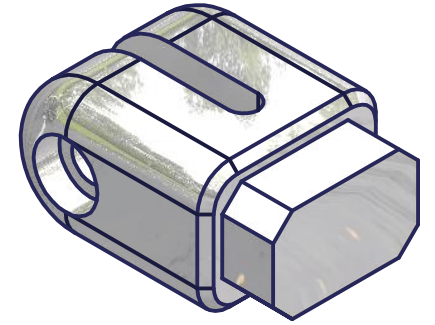
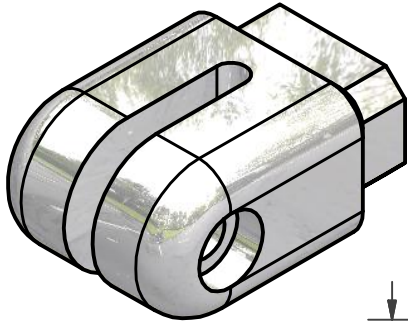
(R86)

Strut Tube  
Material = 6061-T6 AL



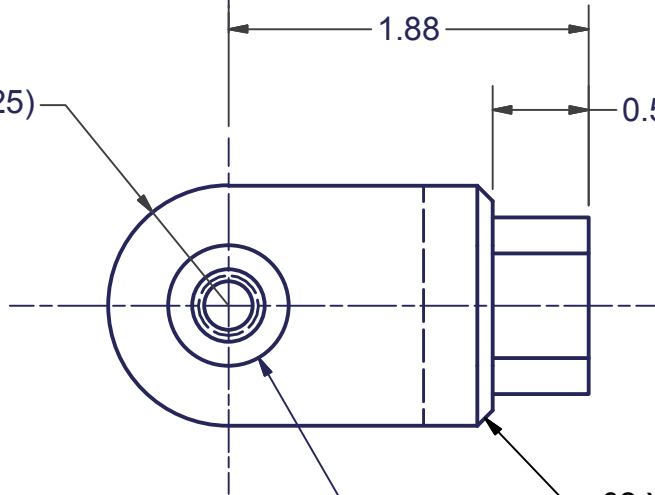
SECTION A-A





R0.31  
TYP

(R0.625)



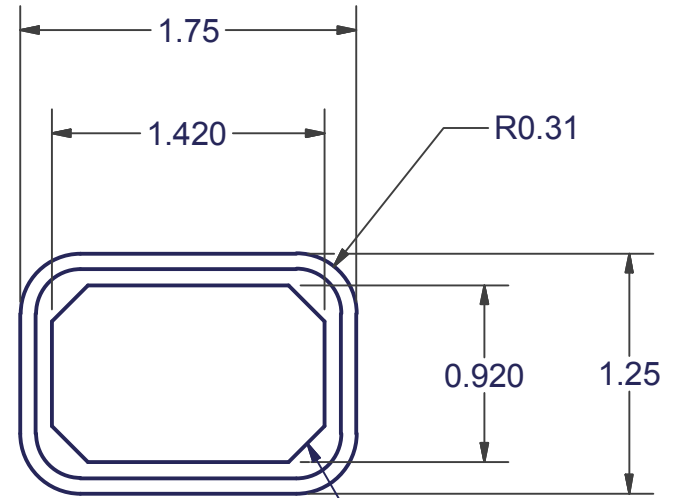
.08 X 45° Chamfer

5/16 UNC

$\varnothing$  0.377

$\varnothing$  0.375

$\varnothing$  0.625



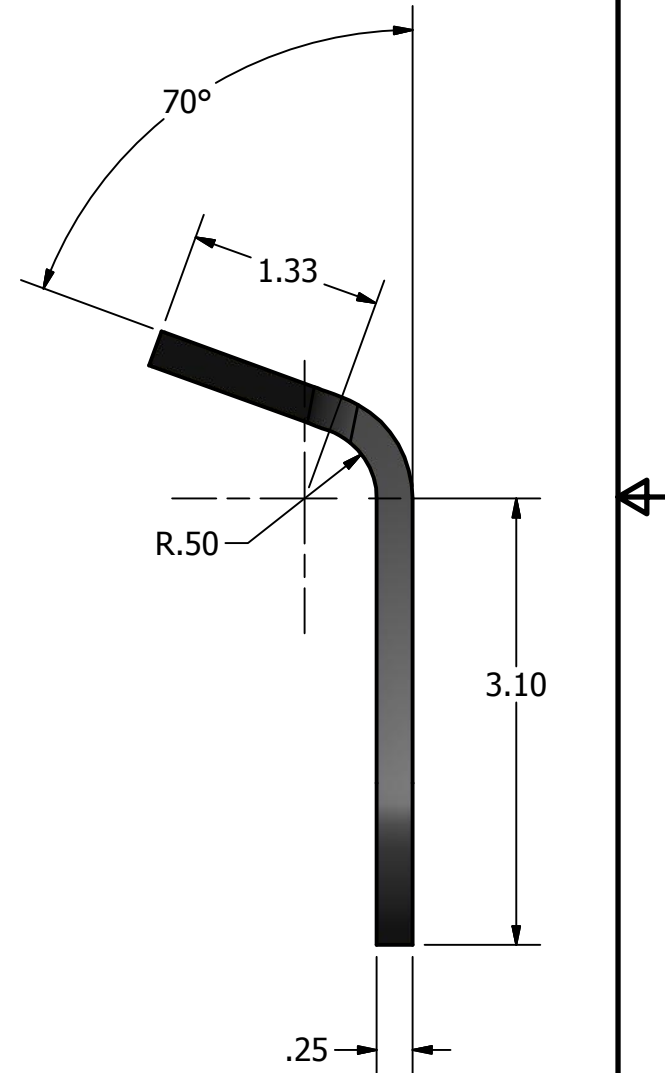
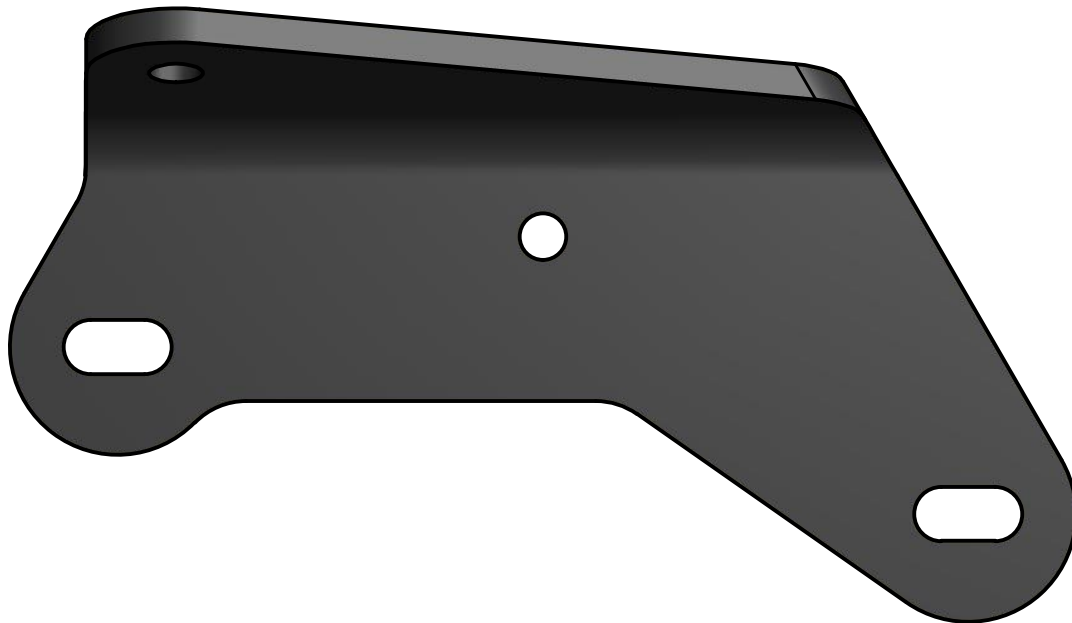
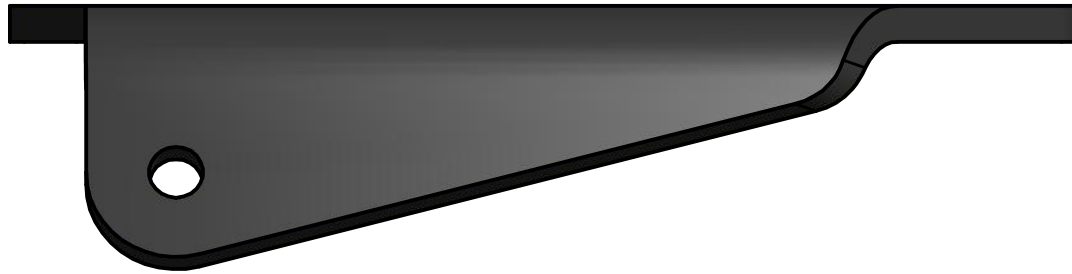
R0.31

0.920

1.25

0.19 X 45° Chamfer  
TYP

Clevis Joint  
Material = 6061-T6 AL  
Quantity = 2



Strut Bracket, Left (As Shown)

Strut Bracket, Right (Opposite)

Finish = Black Powdercoat, Cardinal #P004-BK02

Qty = 1 EA

**Strut Bracket Flat Pattern**  
**Material = 1/4" HR Mild Steel**  
**Qty = 2**

