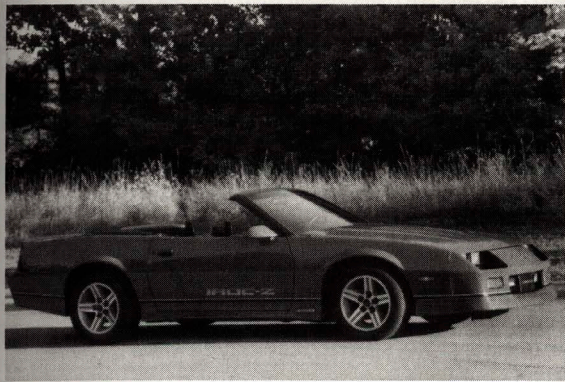


# 1987 CAMARO

Production: 60,439 V6, 77,321 V8, 137,760 total.



1987 IROC-Z Convertible

Chevrolet photo

## 1987 NUMBERS

**Vehicle Identification Example:** 1G1FP21HXHL100001

- Fifth digit is model level: P= Camaro (all models).
- Eighth digit is engine code: 8=350ci V8 (B2L) F=305ci V8 (LB9)  
H=305ci V8 (LG4) S=173ci V6 (LB8)
- Tenth digit is model year: H=1987
- Eleventh digit is N for Norwood assembly, L for Van Nuys.
- Last six digits increased one for each car built at each plant.

**Dimensions:** Length: 187.8 inches    Height: 49.8 inches  
Width: 72.0 inches    Wheelbase: 101.0 inches

### Suffix:

C7J: 305ci, at, uu	DFL: 305ci, mt	SFP: 305ci, mt
C7L: 305ci, mt, ex	SCC: 173ci, uu	SFS: 305ci, mt
C7M: 305ci, at, ex	SCD: 173ci, uu	SFU: 305ci, mt
D3Y: 305ci, at, ex	SDB: 305ci, at	SFW: 305ci, at
D4W: 305ci, at, ex	SDD: 305ci, at	SFX: 305ci, mt
DBP: 173ci, uu	SDK: 305ci, at	SNA: 350ci, at
DBR: 173ci, uu	SFL: 305ci, at	SNB: 350ci, at

- Some suffix codes were universal (fifty state plus Canada).

**Abbreviations:** at=automatic transmission, ce=california emissions, ci=cubic inch, ex=export (canada), mt=manual transmission, uu=uncertain usage.

## 1987 FACTS

• Berlinetta was discontinued early in 1986 and not replaced. For 1987, an LT was introduced. LT was not a separate model, but was an option for Sport Coupe models, just as IROC was an option for Z28 models.

• A Camaro convertible was available for the first time since 1969. Unlike 1969s, which were factory-built alongside coupes, 1987 convertibles were built as RPO CC1 coupes, then converted by ASC Incorporated. Convertibles could be ordered in both Camaro models, the Sport Coupe or Z28, or their variants, the LT Sport Coupe or IROC Z28.

• The 350ci "Corvette" engine was available with IROC Z28 Camaros for 1987 as RPO B2L. Unlike Corvette, Camaro's version had iron heads instead of aluminum, and iron exhaust manifolds instead of stainless steel. Camaro was rated at 225hp compared to 240hp in Corvettes.

## 1987 FACTS cont...

- The Norwood, Ohio, Camaro (and Firebird) assembly plant was closed at the end of the 1987 model year.
- The LT (RPO B4E) included sport mirrors, custom interior, accent striping, deluxe luggage compartment and locking storage (coupe), auxiliary lighting, soft-ride suspension, and full wheel covers. LT was not available with Z28.
- The IROC option (RPO B4Z) included special suspension, stowaway spare tire, P245/50VR16 blackwall tires, aluminum wheels and halogen fog lamps. Available only with Z28.
- As part of an effort to produce an affordable, insurable, sporty Camaro, Chevrolet offered a limited production RS model during 1987 in limited geographical areas. Production employees of the Van Nuys, California Camaro assembly plant participated in the selection of equipment which included the V6 multi-port fuel injected engine, body-color front, rear and side ground effects panels, spoiler, and Z28 body-color, five-spoke wheels.
- The center, high-mount stoplamp was added to the RPO D80 spoiler in 1987. For Camaros not equipped with the spoiler, the lamp continued to be mounted to the forward edge of the rear window. Convertible models had the stoplamp in their unique rear spoilers.
- The RPO B2L 350ci, 225hp V8 engine could not be ordered with 1987 Camaro convertibles from Chevrolet dealers. However, ASC did build convertibles for customer-owned Camaros (also true in 1986) and some 1987 350ci Camaro convertibles were definitely built.
- Chevrolet increased its extended powertrain warranty protection for Camaros in March 1987 to six years or 60,000 miles.

## 1987 OPTIONS

RPO	Description	Qty	Retail
1FP87	Camaro Sport Coupe, 6-cylinder .....	83,890	10,409.00
1FP87	Camaro Sport Coupe Convertible, 8-cylinder ....	263	15,208.00
1FP87	Camaro Z28 Sport Coupe, 8-cylinder .....	52,863	13,233.00
1FP87	Camaro Z28 Sport Coupe Convertible, 8-cyl .....	744	17,632.00
AG9	Power Seat, driver side .....	1,385	*
AM9	Seat Back, split folding rear .....	36,864	50.00
AU3	Power Door Locks .....	8,597	145.00
A01	Tinted Glass, all windows .....	20,599	120.00
A31	Power Windows .....	6,509	*
A90	Power Hatch Release .....	8,413	*
B2L	Engine, 350ci, 220hp V8 (IROC-Z only) .....	12,105	1,045.00
B4E	LT Package .....	794	*
B4Z	IROC Sport Equipment Package .....	38,889	*
B34	Floor Mats, carpet insert, two front .....	8,792	*
B35	Floor Mats, carpet insert, two rear .....	8,790	*
B48	Luggage Compartment Trim, deluxe .....	25,943	164.00
B84	Moldings, body side .....	22,309	60.00
B91	Moldings, door edge (black) .....	19,065	15.00
CC1	Roof Panels, removable glass .....	59,600	866.00
CD4	Windshield Wipers, intermittent .....	8,838	*
C49	Defogger, rear window .....	86,146	145.00
C60	Air Conditioning .....	14,743	775.00
DD8	Mirror, inside rearview automatic .....	901	*
DE1	Louvers, rear window .....	9,487	210.00
DG7	Mirrors, electric twin remote .....	1,861	*
DK6	Console, roof .....	3,366	*
D27	Cover, locking rear storage .....	3,414	80.00
D42	Cover, rear compartment cargo area .....	4,913	*
D80	Spoiler .....	25,925	69.00
G80	Rear Axle, limited slip .....	40,823	100.00
G92	Rear Axle, performance ratio (IROC Z only) ..	10,533	21.00

## 1987 OPTIONS cont...

RPO	Description	Qty	Retail
J65	Brakes, power front disc and rear disc .....	23,874	179.00
KC4	Cooler, engine oil (IROC-Z only) .....	23,882	110.00
K34	Speed Control, with resume .....	4,913	*
LB9	Engine, 305ci, 190hp (Z28 only) .....	28,370	745.00
LG4	Engine, 305ci, 165hp or 170hp (Sport Coupe) ..	36,845	400.00
MX0	Transmission, automatic with overdrive .....	115,109	490.00
N33	Tilt Steering Column .....	8,862	*
PE1	Wheels, aluminum .....	4,653	215.00
QDX	Tires, P195/70R14 Eagle GT (LT only) .....	4,522	90.00
QDZ	Tires, P245/50VR16 blackwall (IROC-Z only) ..	38,889	nc
QHX	Tires, P205/70R14 blackwall (LT Coupe only) ..	2,242	nc
QHY	Tires, P205/70R14 white stripe (LT Coupe only) ..	1,793	76.00
QYH	Tires, P215/65R15 white letter .....	42,058	102.00
QYZ	Tires, P215/65R15 blackwall (Sport Coupe only) ..	48,256	-102.00
TR9	Lighting, auxiliary .....	7,991	*
TT4	Headlamps, halogen (4) .....	5,819	*
T96	Fog lamps, halogen .....	1,729	*
UA1	Battery, heavy duty .....	21,099	26.00
UL5	Radio, delete .....	4,863	*
UL6	Radio, AM with clock .....	179	*
UM6	Radio, stereo, cassette, clock, seek/scan .....	17,696	*
UM7	Radio, stereo, clock, seek/scan .....	5,966	*
UU8	Radio, stereo, Delco Bose, clock, seek/scan .....	8,517	*
UX1	Radio, stereo, cassette, clock, s/s, equalizer .....	8,160	*
U21	Gage Package .....	33,252	149.00
U75	Power Antenna .....	28,327	70.00
YF5	Emission Equipment, required for California ..	14,705	99.00
1SA	Sport Coupe Package 1 .....		nc
1SB	Sport Coupe Package 2 .....		1,212.00
1SC	Sport Coupe Package 3 (\$1,559 for convertible) .....		1,628.00
1SD	Sport Coupe Package 4 (\$1,889 for convertible) .....		2,126.00
1SA	LT Package 1 (\$1,358 for convertible) .....		1,522.00
1SB	LT Package 2 (\$1,705 for convertible) .....		1,938.00
1SC	LT Package 3 (\$2,035 for convertible) .....		2,387.00
1SD	LT Package 4 (\$2,376 for convertible) .....		2,858.00
1SA	Z28 Package 1 .....		nc
1SB	Z28 Package 2 (\$1,900 for convertible) .....		1,999.00
1SC	Z28 Package 3 with RPO D42 (coupe only) .....		2,539.00
1SC	Z28 Package 3 without RPO D42 (\$2,241 for conv) ..		2,470.00
1SA	IROC Package 1 .....		699.00
1SB	IROC Package 2 (\$2,359 for convertible) .....		2,409.00
1SC	IROC Package 3 with RPO D42 (coupe only) .....		3,273.00
1SC	IROC Package 3 without RPO D42 (\$2,975 for conv) ..		3,204.00

\* Indicates option was part of a model option group and was not priced or available (except radios) separately. Quantities shown for some of these options do not accurately reflect total units installed in all packages.

• Prices shown were introductory retail including delivery and handling. They didn't include transportation, or state and local taxes.

• Base vinyl to cloth seat upgrade for Sport Coupe and Z28 cost \$28.00. The Custom Interior (no cost with LT) was \$277.00. Leather seating was \$750.00 with Sport Coupe and Z28, \$473.00 with LT.

• The base V6 for Sport Coupe models was 173ci, 135hp. The base V8 for all other models was 305ci, 165hp.

• RPO B48 (luggage compartment trim) was included with LT; not available with convertible; \$84.00 with Z28 Sport Coupe.

• RPO D27 (locking storage cover) was included with LT; required RPOs B48 and UU8 with Z28; not available with convertible.

• RPO J65 (4-wheel disc brakes) required IROC; also required RPO G92

## 1987 OPTIONS cont...

performance axle or RPO B2L engine.

• RPO KC4 (oil cooler) for IROC only (with RPO B2L, or G92 with LB9).

• RPO U63 (AM radio) included with Sport Coupe and Convertible. RPO UU8 (Delco-Bose radio) not available with convertibles. All other radios available with all models. Prices varied according to option packages.

• Options for 1987 were grouped into "option packages." Some options were priced and available separately, some were available separately and packaged, and some were available only in packages.

• 1SA package for Sport Coupe and Conv had AM radio. LT Conv had A01, C60, N33, TR9, UM7 (LT Coupe same plus D27, D42). Z28 Conv had TR9, UL6, U21 (Z28 Coupe same plus D80, less TR9). IROC Conv had TR9, T96, UL6, U21 (IROC Coupe same plus D80, less TR9.)

• 1SB package for Sport Coupe and Conv had A01, C60, N33, UM7. LT Conv had A01, B34, B35, B84, CD4, C60, K34, N33, TR9, UM6 (LT Coupe same plus D27, D42, D80). Z28 Conv had AU3, A01, A31, B34, B35, B84, CD4, C60, K34, N33, TR9, UM6, U21 (Z28 Coupe same plus D80). IROC Conv had AU3, A01, A31, B34, B35, CD4, C60, N33, TR9, T96, UM6, (IROC Coupe same plus A90, D80, less TR9).

• 1SC package for Sport Coupe Conv had A01, B34, B35, B84, CD4, C60, K34, N33, UM6 (Sport Coupe same plus D80). LT Conv had AU3, A01, A31, B34, B35, B84, CD4, C60, K34, N33, TR9, TT4, UM6 (LT Coupe same plus A90, D27, D42, D80). Z28 Conv had AU3, A01, A31, B34, B35, B84, CD4, C60, DG8, K34, N33, TR9, TT4, T96, UM6, U21 (Z28 Coupe same plus A90, DD8, DK6, D42, D80). IROC Coupe and Conv same as Z28 Coupe and Conv except UX1 substituted for UM6.

• 1SD package for Sport Coupe Conv had AU3, A01, A31, B34, B35, B84, CD4, C60, K34, N33, TT4, UM6 (Sport Coupe same plus A90, D42, D80, TR9). LT Conv had AG9, AU3, A01, A31, B34, B35, B84, CD4, C60, DG7, K34, N33, TR9, TT4, T96, UM6 (LT Coupe same plus A90, DD8, DK6, D27, D42, D80). 1SD package not available for Z28 or IROC.

## 1987 COLORS

Code	Exterior	Qty	Models	Interiors
12	Silver .....	4,997	Lc-Spc-Zc	Bk-G-R-S
13	Bright Blue .....	18,375	Lc-Spc-Zc-Zci	Bk-G-S
28	Dark Blue .....	7,148	Lc-Spc-Zc	Bk-G-S
40	White .....	17,713	Lc-Spc-Zc-Zci	Bk-G-R-S
41	Black .....	20,871	Lc-Spc-Zc-Zci	Bk-G-R-S
51	Yellow .....	3,052	Lc-Spc-Zc-Zci	Bk-G-S
68	Dark Brown .....	1,633	Lc-Spc-Zc	Bk-S
74	Dark Red .....	24,922	Lc-Spc-Zc-Zci	Bk-G-R-S
81	Bright Red .....	31,231	Lc-Spc-Zc-Zci	Bk-G-R-S
84	Medium Gray .....	2,324	Lc-Spc-Zc	B-G-S
87	Medium Gray .....	5,494	Lc-Spc-Zc	B-G-S

• Chevrolet specified the interior-exterior combinations shown to be the only ones available, but special orders may have been built. Not all interiors shown were available with all models shown.

• Convertibles were available in codes 13, 40, 41, 74, 81, and 87 exteriors. Convertible tops were saddle (limited availability) and black.

**Interior Codes:** 19B=Bk-sc, 19C=Bk-cc, 19R=Bk-sv, 62B=S-sc, 62C=S-cc, 62R=S-sv, 62Z=S-le, 72B=R-sc, 72C=R-cc, 72R=R-sv, 72Z=R-le, 82B=G-sc, 82C=G-cc, 82R=G-sv, 82Z=G-le.

**Abbreviations:** Bk=Black, cc=custom cloth, G=Gray, Lc=LT Coupe, le=leather, R=Red, S=Saddle, sc=standard cloth, sv=standard vinyl, Spc=Sport Coupe, Zc=Z28 Sport Coupe, Zci=IROC Z28 Sport Coupe.