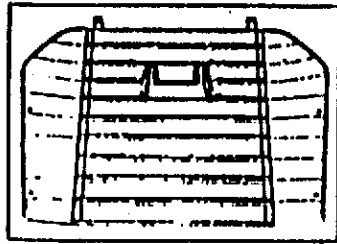


INSTALLATION INSTRUCTION SHEET

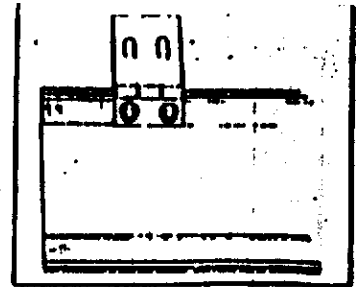
ITEM REFERENCE TORQUE EXISTING AS PART OF

KIT CONTENTS

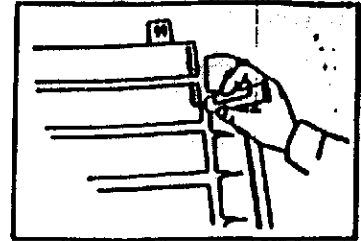
- | QTY. | DESCRIPTION |
|------|-----------------------------|
| 1 | RH End Cap Assembly |
| 1 | LH End Cap Assembly |
| 10 | Numbered Louvers |
| 2 | Hinge Base Plate Assembly |
| 2 | Upper Side Bracket Assembly |
| 2 | Lower Side Bracket Assembly |
| 2 | Rear Bracket Assembly |
| 4 | Hinge Base Locknuts |
| 1 | Key Envelope (2 keys) |
| 1 | Tube Adhesive |



1. Arrange the parts upside down as shown on a clean, soft surface, #1 louver (with hinges) on top and all others arranged in numerical order below.



2. The arrow on each louver (which is on the same side as the number) **MUST POINT UP, TOWARD THE HINGES.**

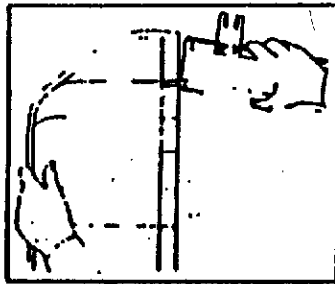


3. Apply a 1/8" bead along both edges of each louver 3/8" from the end.

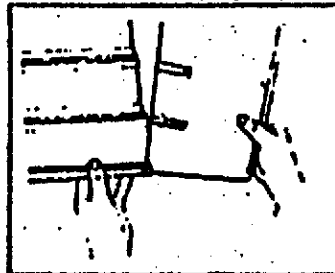
PART NO.	12339878	PAGE 2 OF
----------	----------	-----------

INSTALLATION INSTRUCTION SHEET

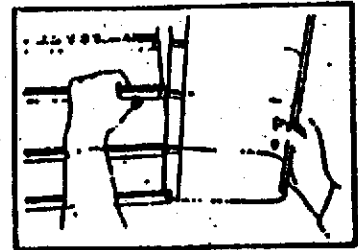
ITEM REFERENCE TORQUE EXISTING AS PART OF



4. Begin assembly by sliding the top louver onto the end cap on the left as shown. The louver will mate flush on the show side when pushed completely on. Repeat the procedure for each succeeding louver until the left side is completely assembled. **NOTE:** From this point forward it will be necessary to have two people involved in the assembly.



5. Insert bottom tongue of the right hand end cap into the #10 louver and rear lip of the #8 louver as shown. Push firmly. Louver will not go all the way in because of angle of entry, but should be firmly inserted.



6. Now, while one person holds the bottom firmly together, the other begins mating the rest of the end cap tongue with the louvers in order, from bottom to top, the person holding the bottom should not only keep a firm hold as the two do not separate, but as work progresses keep working the bottom tongue deeper and deeper until the lock snaps. A little patience will go a long way in this step.

PART NO.	12339878	PAGE 3 OF
----------	----------	-----------